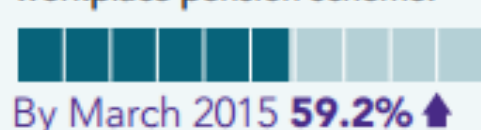


Download the full report from TPR

Automatic enrolment: results so far

Proportion of UK employees in a workplace pension scheme:



Total number of UK employees automatically enrolled:



35,000 ✓

employers completed their declaration of compliance between April 2014 and March 2015.

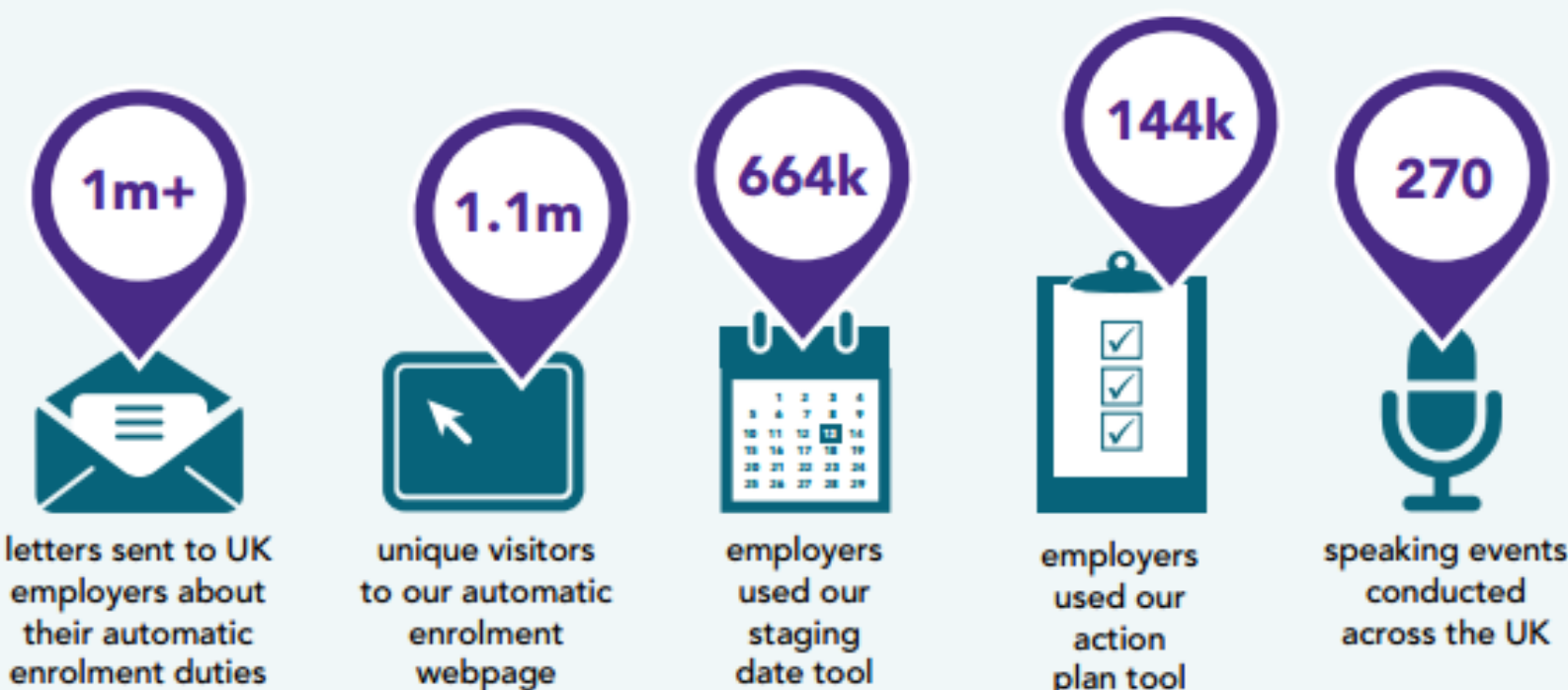
Period	Workforce size	Number enrolled
2014-15	4.7m	2m (42%)
Cumulative	20m	5.2 (26%)

51.7% of employers who completed the declaration of compliance since 2012 used postponement:

4,590 → **23,704**
Total April 2014 Total March 2015

and **6,752** employers brought their staging date forward.

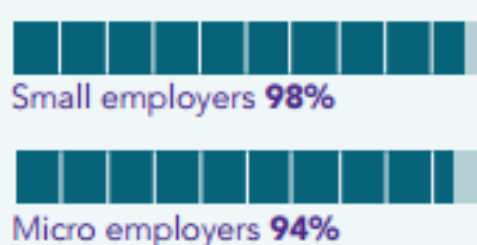
Awareness, understanding and engagement



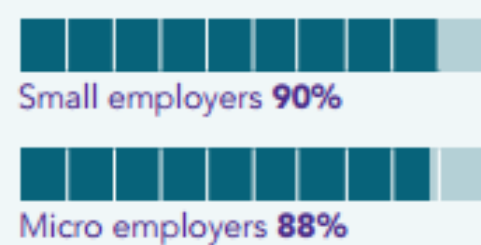
Small and micro employers

Awareness and understanding at two to four months prior to staging is comparable to large and medium employers at a similar point.

Awareness



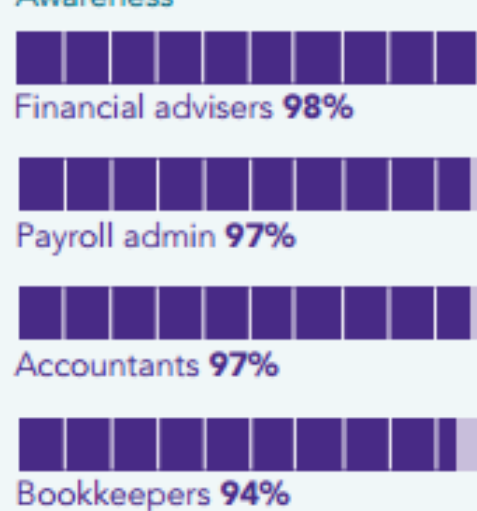
Understanding



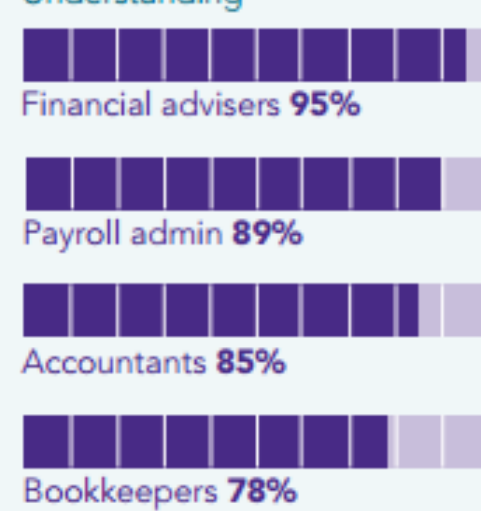
Intermediaries

Awareness of automatic enrolment is nearly universal.

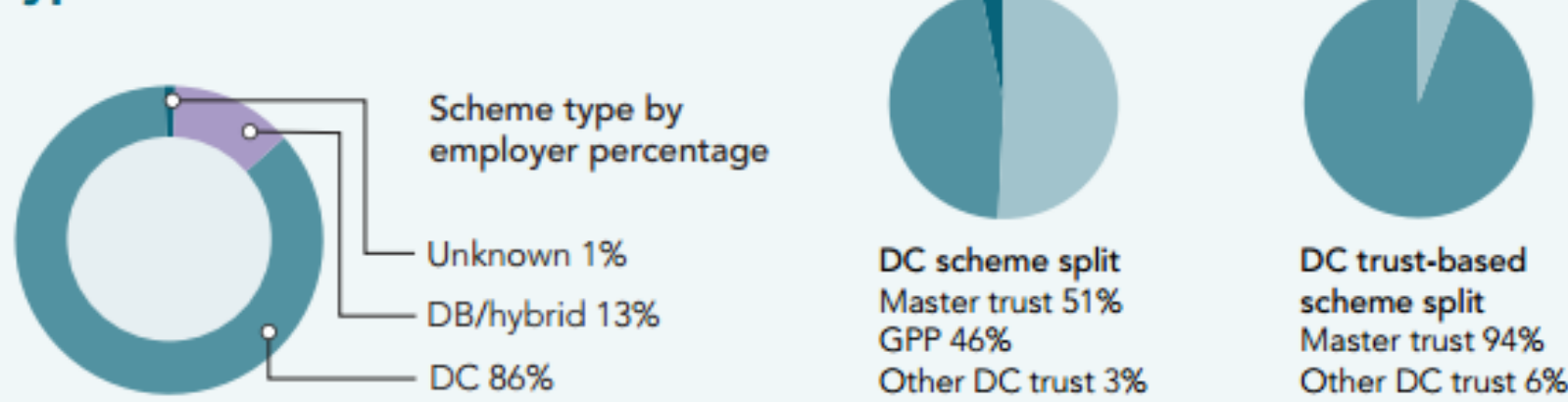
Awareness



Understanding



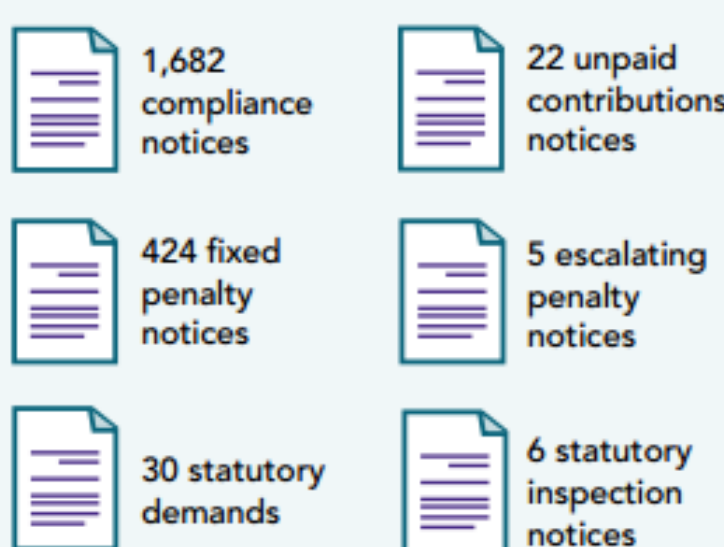
Type of scheme used



Our interventions



We issued:

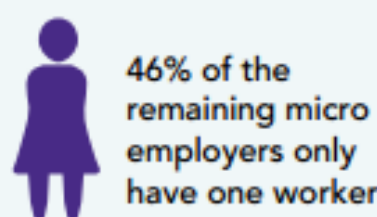


Forthcoming trends and challenges



Sizes of those still to stage:

Of the employers left to stage:



To find out more information about auto enrolment, you can visit our auto enrolment insight page below, [view the original Automatic Enrolment Commentary and Analysis from TPR.](#)

iris.co.uk/autoenrolment

Call: 0844 844 9644

