



# **Year-end Guide**

## **GP Payroll**

April 2019



## Contents

<b>Dear Customer .....</b>	<b>3</b>
<b>Checklist for Year End.....</b>	<b>4</b>
<b>Year End Procedures.....</b>	<b>5</b>
<b>Automatic Update.....</b>	<b>5</b>
<b>Check for Updates - Automatic.....</b>	<b>5</b>
<b>Check for Updates - Manual .....</b>	<b>5</b>
<b>Downloading Updates .....</b>	<b>5</b>
Pause.....	6
Stop .....	6
<b>Install Updates .....</b>	<b>6</b>
Loading the upgrade DVD .....	7
<b>The England/Wales NHS Pension Agency .....</b>	<b>9</b>
<b>The Northern Ireland NHS Pension Agency .....</b>	<b>9</b>
<b>The Scottish NHS Pension Agency (SPPA) .....</b>	<b>10</b>
<b>Electronic Annual Pension Returns (Scottish Pension Agency).....</b>	<b>11</b>
Uploading the NSR03 electronic file to SPPA.....	12

## Dear Customer

Welcome to your guide to completing payroll year end 2018/2019.

The guide contains:

- Year-end help – step by step instructions for completing and submitting your final **Full Payment Submission/Employer Payment Summary** for the tax year and moving your practice into the new tax year
- **Practice checklist** – you can print the checklist and use it along with the **Year-end Guide**, ticking each step as you complete it

## Checklist for Year End

- Step 1** Ensure you have installed IRIS GP Payroll version 2019.1.23
- Step 2** Calculate the final pay period of the 2018/2019 tax year
- Step 3** Issue any outstanding P45s
- Step 4** Create a backup
- Step 5** Submit your **Full Payment Submission**; if you do not need to submit an **Employer Payment Summary** for March, tick **Final submission for this tax year**
- Step 6** Submit your **Final Employer Payment Summary for tax year**, if required, to HMRC
- Step 7** Print P60s from the **End-of-Year Facilities** screen and issue to current employees by 31 May 2019
- Step 8** Print deduction working sheets – P11 from the **End-of-Year Facilities** screen
- Step 9** Produce end-of-year pension statements from the **End-of-Year Facilities** screen
- Step 10** Transfer employees into the next tax year on the **End-of-Year Facilities** screen
- Step 11** Check your employees' and employers' pension contribution rates as per the on-screen warning
- Step 12** Indicate if the Practice is eligible for **Small Employer's Relief**

## Year End Procedures

### Step 1 Updating GP Payroll

## Automatic Update

**Update IRIS GP Payroll as soon as possible with the latest Automatic Update** (Legislation Critical Update). It will not affect your normal payroll calculations and contains changes you need to complete your end-of-year filing and to move forward into the new tax year.

**Please note:** release 2019.1.23 of IRIS GP Payroll includes everything you need for finalising your 2018/2019 year end, PLUS all the changes required for running payrolls in the 2019/2020 tax year.

## Check for Updates - Automatic

When you log into the software, providing it can establish a link to the **IRIS Online for Practice Managers** website, the system will check for any IRIS GP Payroll software updates. A Legislation Critical Year-End update will be available and you will be given the option to download it. Click **Yes** to download the update now.

This update **MUST** be installed before performing any Year-End procedures.

By clicking on the **"What's in this update?"** link you are able to view the **Release Notes** associated with this update.

## Check for Updates – Manual

There is also a manual process which allows you to check for and download updates at your convenience. This could be useful if you have selected **No** for a non-critical download and you decide that you do want to download it after all. To check for updates, click **Support** from the main screen. If there is a newer version available, click **Update Now**.

## Downloading Updates

If you select **Update Now** to start downloading a new version you can continue to use IRIS GP Payroll while the files are being downloaded, however for the purpose of the Legislation Critical Year End update this is **NOT** recommended.

A progress bar will appear on the screen. If the download stops before completion, for example if your internet connection fails, the next time you log into IRIS GP Payroll it will resume downloading from the point it had reached. If the download is unable to complete, there are several ways to contact your IRIS Support team to request a DVD in order to complete the update.

## Pause

There is an option to pause the download, this can be done by right clicking on the download icon on the task bar and selecting **Pause**. The next time you log into IRIS GP Payroll you will receive a prompt to continue with the download.

## Stop

The download can be stopped by right clicking on the download icon on the task bar and selecting **Stop**. This will delete any files already downloaded. The next time you log into IRIS GP Payroll you will be prompted to download the update again.

Once the download is complete you will see a message telling you that you can install the update the next time you run IRIS GP Payroll. You need to ensure the Year-End Update is complete prior to starting your Year-End procedures

## Install Updates

When you log into IRIS GP Payroll again after downloading the update, you will be prompted to install the downloaded version.

If you choose to install the update the following message will appear: **Updating software, please wait...** You will then see a message confirming that the update is complete and displaying the version number, 2019.1.23. Once you click **OK**, the **Log In** screen will appear.

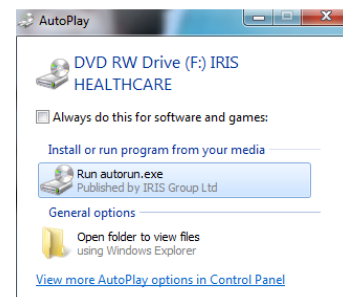
## Loading the upgrade DVD

**If you requested a DVD, load it as soon as possible.** It will not affect your normal payroll calculations. It contains the changes you need to complete your end-of-year filing and to move forward into the new tax year. This update **MUST** be installed before performing any Year-End procedures.

**Please note:** IRIS GP Payroll v2019.1.23 includes everything you need for finalising the 2018/2019 year end, PLUS all the changes required for running payrolls in the 2019/2020 tax year

What you should do now:

1. Check that you have an up-to-date backup before loading the DVD
2. Place the DVD in the DVD drive
3. Select **Run autorun.exe** from the screen that is automatically displayed



4. From the **Welcome to IRIS Healthcare Solutions** screen select **Install IRIS GP Payroll**
5. From the next screen, choose **Upgrade existing install**
6. Follow the on-screen instructions until the upgrade is complete – IRIS GP Payroll closes when it has finished
7. Start IRIS GP Payroll again and check that the version number on the top line of the screen is now **Version 2019.1.23**



## Step 2 Do payroll runs

Calculate your final pay period of the 2018/2019 tax year

## Step 3 P45s

Issue any P45s for employees you do not intend to pay in the 2019/2020 tax year because you will not be able to do this after you **Transfer employee details into the next tax year**

#### Step 4 Back up your 2018/2019 data

Follow your usual back-up routine

**Please note:** If you intend to send an **Employer Payment Summary** this month to HMRC to indicate any adjustments, due to statutory payments reclaimed/recovered, **No employees paid in Current Month, No employees will be paid in future months** or paid App Levy, send your normal FPS then skip to **Step 6**. If you do not need to send an EPS, please follow **Step 5** to submit your final FPS then skip to **Step 7**

#### Step 5 Send Final FPS for this tax year

From the **RTI Submissions** button; select **Full Payment Submission (FPS)**, then click **Next** and tick **Final submission for this tax year**.

- 5.1 Check the figures on the **Full Payment Submission – Final Confirmation** screen. Click **Print Summary** and/or **Print Details** to print a copy for your records, if you wish
- 5.2 Click **Send** to submit the Full Payment Submission. Go to **Step 7**

#### Step 6 Send Full Payment Submission then Final Employer Payment Summary for tax year

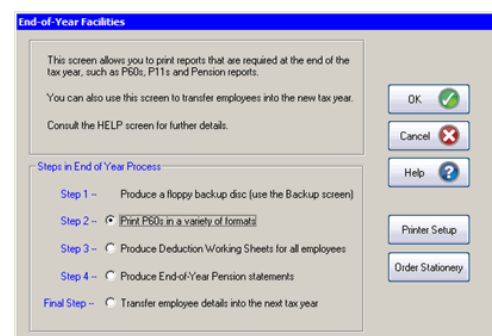
Follow this step if you need to send a **Final Employer Payment Summary for tax year** to HMRC to indicate adjustments due to SMP, SAP, SPP or ShPP reclaimed/recovered in the final pay period, **No employees paid (no Tax & NIC liability)** this month or **App Levy** due this tax year:

- 6.1 Send your FPS following your normal procedures, ensure you have sent an FPS for Month 12 making sure **Final submission for this tax year** is not ticked
- 6.2 Send your Final EPS. Click **RTI Submissions** and choose **Employer Payment Summary (EPS)** then click **Next**
- 6.3 Select **Final Employer Payment Summary for tax year** then **Next**
- 6.4 Check the figures on the **Employer Payment Summary** values screen and amend the values if necessary
- 6.5 Check the values on the **Employer Payment Summary – Confirm year to-date values** screen and click **Print** if you require an **EPS Confirmation** report. Click **Send** to submit to HMRC

#### Step 7 Print P60 year-end forms

Click on the **End of Year** button on the main option screen. This presents the menu of tasks to be carried out at the end of the year.

Select **Step 2 - Print P60s in a variety of formats**.





P60s are given to all current employees. Give only one P60 to an employee, even if that employee has had more than one period of employment with you in the tax year. The P60 should be the one which covers the end of the tax year.

P60 forms, which are guaranteed to fit your IRIS GP Payroll software, are available from IRIS. Please call 0344 815 5660 for more information.

If you are publishing P60s using IRIS AE Suite™, select **Print employee P60s onto blank A4 paper** then **OK** then **Publish**.

### Step 8 Print P11s

Print P11s (Deduction Working Sheets) from the **End-of-Year Facilities** screen for your records

### Step 9 NHS pension agency returns - Produce End-of-Year Pension statements

Pension annual returns are produced using the fourth option (**Produce End-of-Year Pension statements**) of the **End-of-Year Facilities**. The same summaries can be printed from the **Print Output/Export Data** screen by selecting **Pension Summaries** and choosing the third option **Summary of employee payments**.

**Please note:** We advise you to print paper copies of the employees' annual pension statements and retain them for 3 years (as with P11s). These printed summaries can be useful if an employee leaves the practice and the Pension Agency then requests information about previous years' contributions. This happens frequently and although it is possible to load previous years' payroll data to extract this information, it is easier to keep copies of the annual pension statements.

The **England/Wales NHS Pension Agency** no longer issue paper SD55s for completion; employee SD55 details must be entered via the internet. Go to the **Pension Online (POL)** section on the NHS Pensions website.

IRIS GP Payroll allows you to print an SD55 form for each employee. The printed version has been designed to resemble the agency's web-based form. You can use the information on the printed SD55 to complete the online SD55.

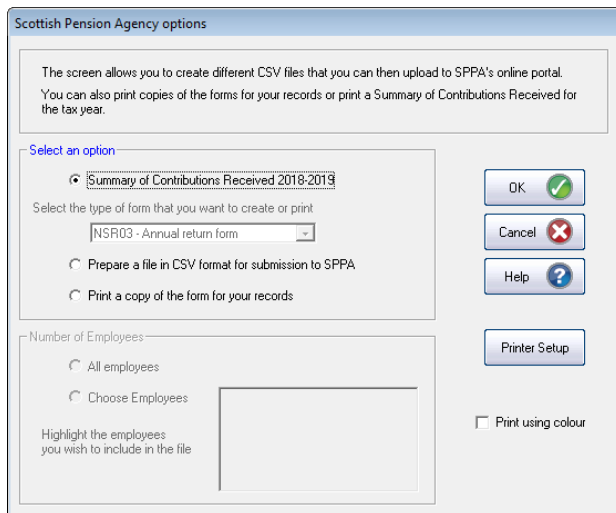
## The Northern Ireland NHS Pension Agency

IRIS GP Payroll prints an annual pension schedule for all employees in the scheme. The figures must be transferred manually to the official forms supplied by the Northern Ireland Pension Agency.

## The Scottish NHS Pension Agency (SPPA)

Scottish practices must send their employee's annual pension returns to the Scottish Public Pensions Agency (SPPA) in an electronic form. IRIS GP Payroll allows you to create a file containing all NSR03 details which you are then able to upload to SPPA's online portal.

When a Scottish practice selects the fourth option on the end-of-year menu (**Produce End of Year Pension statements**) a new screen will appear:



The first option in this screen allows you to print the **Summary of Contributions Received** report, which lists all employee and employer contributions over the last 12 months. This is printed onto a single A4 sheet and is not transmitted electronically to SPPA.

The second option in this screen is where you can select the type of report or file that you wish to create. As you are completing end of year returns you should select **NSR03 – Annual return form**. Once selected you can then opt to either **Prepare a file in CSV format for submission to SPPA** or **Print a copy of the form for your records**. The next steps will explain how to create the CSV file to submit electronically, but we strongly recommend that you also print paper copies and retain them for 3 years. Printed copies of the forms should not be posted to SPPA as the agency only accept the annual return form in electronic format.

On this screen you can opt to create the file or report for individual employees or for all employees. When creating the NSR03 – Annual return form you should select **All employees**.

## Electronic Annual Pension Returns (Scottish Pension Agency)

Selecting **Prepare a file in CSV format for submission to SPPA** in the above screen will start a wizard which allows you to create the electronic NSR03 file for submission to SPPA. This file contains all of the NSR03 information required by SPPA and can be uploaded directly to their online portal.

The first screen describes the steps in this process:



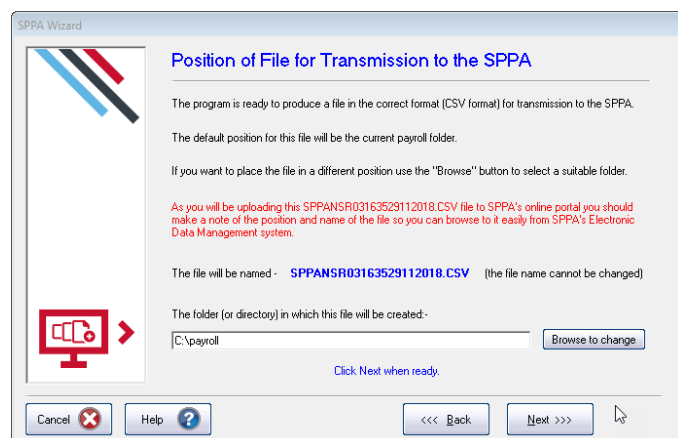
The file will only gather data for employees who continue in the NHS scheme at the end of the year. Those who have left the practice or left the pension scheme before the end of the year should already have had a **leaver form** (NSR02) sent.

IRIS GP Payroll checks that employee Superannuation Numbers and Employment Numbers (also known as Contract Numbers) are present and are in the correct format. If any of these numbers are incorrect you will need to return to the employee's pension screen and correct the error. If any numbers are incorrect or missing please contact the SPPA helpline on **01896 893 000** and ask for the NHS Service Team.

The next screen defines where the electronic file will be stored.

The default position for the electronic file will be the folder (directory) of IRIS GP Payroll. If you would prefer a different location use the **Browse to Change** button.

As you will be uploading this file to SPPA's online portal you should make a note of the file name and location so that you can browse to it easily from SPPA's Electronic Data Management system.



When you click on **Next** the file will be placed in the folder that you have selected.

## Uploading the NSR03 electronic file to SPPA

Once your NSR03.CSV has been created and you have made a note of the file name and where it is located you can log in to SPPA's Electronic Data Management system to upload it. Click [here](#) to be taken to the log in screen.

Once you are logged in select the **Annual Return | Bulk Upload** option. In the next screen you can click **Browse** to select the file you have created, and then click **Upload**.



### Step 10 Transferring employees into the new tax year

The final step at the end of the year is to transfer the employee files into the new tax year. This is the last option on the end-of-year menu. It is important that all tasks relating to the 2018/2019 tax year have been completed before this option is selected.

In particular:

- You must produce a P11 (Deduction Working Sheet) for every employee and retain them for 3 years. This can be done from the end-of-year menu
- You must take a backup to store the full year's payroll data
- You should print a copy of the employee annual pension summaries and retain them for 3 years

When you select the last option of the end-of-year menu (**Transfer employee details into the next tax year**) IRIS GP Payroll will create a copy of the current software and data on a separate area of your computer's hard disk. You will be able to access this copy from the new 2019/2020 payroll system. This will allow you to examine the 2018/2019 data without having to restore the software and data. Although you create a copy on the hard disk you must also take a separate backup of payroll data – this will be your fall-back system if your hard disk is damaged.

The transfer to the new tax year will then take place. Employees with a leaving date will be removed. Employee files will be transferred to the new tax year with the same basic data. Tax codes with a month 1 status will be changed to the normal cumulative code.

The **Transfer employee details into the next tax year** option will also apply all the changes necessary for the coming 2019/2020 tax year. Employees with an L tax code will have their code uplifted automatically by 65 points, for example 1185L will be changed to 1250L, M will increase by 71 points and N by 59 points. All other amended rates and limits for NI, tax and statutory payments will also be applied automatically, as well as other legislation changes and several

enhancements to the software. For a comprehensive description of all changes in IRIS GP Payroll version 2019.1.23 please see the **Release Notes** document which can be printed from the main screen **Release Notes** button or downloaded [here](#).

#### Step 11 [Pension Contribution Rates](#)

As per the Auto Enrolment legislation, minimum contributions will increase in April 2019. During the **End of Year | Transfer employee details into the next tax year** process, a warning message will be displayed advising you to check your employer/employees' pension contribution rates – it is important that you carry this out to comply with the regulations. For further information on the TPR minimum contribution rates click [here](#).

#### Step 12 [Small Employer Relief](#)

To qualify for Small Employer's Relief, the total amount of NIC paid by the practice in the previous tax year (i.e. 2018/2019) must be less than the Small Employer's Relief threshold, which is currently £45,000. If your practice no longer qualifies you must click on **Setup/ Options**, click on the **1 - Program Options** tab and select the option **The practice IS NOT eligible for Small Employer's Relief**.

## Additional Software and Services Available

### IRIS AE Suite™

The IRIS AE Suite™ works seamlessly with all IRIS payrolls to easily manage auto enrolment. It will assess employees as part of your payroll run, deduct the necessary contributions, produce files in the right format for your pension provider\* and generate the necessary employee communications.

### IRIS OpenPayslips

Instantly publish electronic payslips to a secure portal which employees can access from their mobile phone, tablet or PC. IRIS OpenPayslips cuts payslip distribution time to zero and is included as standard with the IRIS AE Suite™.

### IRIS Auto Enrolment Training Seminars

Choose from a range of IRIS training seminars to ensure you understand both auto enrolment legislation and how to implement it within your IRIS software.

### Useful numbers

HMRC online service helpdesk	HMRC employer helpline
Tel: 0300 200 3600	Tel: 0300 200 3200
Fax: 0844 366 7828	Tel: 0300 200 3211 (new business)
Email: <a href="mailto:helpdesk@ir-efile.gov.uk">helpdesk@ir-efile.gov.uk</a>	

### Contact Sales (including stationery sales)

For IRIS Payrolls	For Earnie Payrolls
Tel: 0344 815 5700	Tel: 0344 815 5677
Email: <a href="mailto:sales@iris.co.uk">sales@iris.co.uk</a>	Email: <a href="mailto:earniesales@iris.co.uk">earniesales@iris.co.uk</a>

### Contact support

Your Product	Phone	E-mail
IRIS PAYE-Master	0344 815 5661	<a href="mailto:payroll@iris.co.uk">payroll@iris.co.uk</a>
IRIS Payroll Business	0344 815 5661	<a href="mailto:ipsupport@iris.co.uk">ipsupport@iris.co.uk</a>
IRIS Bureau Payroll	0344 815 5661	<a href="mailto:ipsupport@iris.co.uk">ipsupport@iris.co.uk</a>
IRIS Payroll Professional	0344 815 5671	<a href="mailto:payrollpro@iris.co.uk">payrollpro@iris.co.uk</a>
IRIS GP Payroll	0344 815 5681	<a href="mailto:gpsupport@iris.co.uk">gpsupport@iris.co.uk</a>
IRIS GP Accounts	0344 815 5681	<a href="mailto:gpaccsupport@iris.co.uk">gpaccsupport@iris.co.uk</a>
Earnie or Earnie IQ	0344 815 5671	<a href="mailto:earniesupport@iris.co.uk">earniesupport@iris.co.uk</a>